

# Real Gardens for Real People

# Taranaki Fringe Garden Festival

29<sup>th</sup> October to  
7<sup>th</sup> November 2021



Taranaki

Explore a variety of beautiful gardens  
Purchase plants you've seen in the gardens  
Get practical advice from garden hosts  
Enjoy arts and crafts

Only \$2  
per person,  
payable at each  
garden gate



TaranakiFringeGardenFestival

Programme downloadable from our website

[www.taranakigardens.co.nz](http://www.taranakigardens.co.nz)



## Quick tips for multi day visits

- Allow 45mins - 1 hour for each garden visit, and allow a maximum of 6 gardens per day
- Allow 4-5 days for your tour to cover the majority of our gardens.
- Very economical, only \$2p/p at each garden, this is payable on entry to each garden. We do not have pre-booked tickets.
- Travel each day to a different geographical location, eg. Waitara /Bell Block, Inglewood/Stratford, Hawera & the surrounding countryside, New Plymouth/Oakura/Opunake, Rural Bell Block/Lepperton.
- View icons and information on each garden/POI listing to see if toilets, refreshments, plants for sale and wheelchair access are available and whether parking restrictions apply. Dates and open times are also listed.
- See our website or Venture Taranaki website for accommodation options.
- For more information or help to organise your tour, please contact Anne at taranakigardentrust@gmail.com

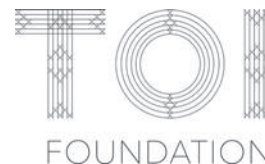
## Important for visitors

- While the garden owners take every care to make sure you enjoy your visit safely, gardening is an outdoor activity and you enter at your own risk.
- There are water features, uneven ground, and overhanging trees.
- We ask you to assume responsibility for your own safety, the safety of those in your care, especially children, and your possessions.
- Please keep to pathways where available.
- No dogs are to be brought through the gardens.



**We would love you to visit again. Thank you!**

**proudly sponsored by**



**Thank you to tgm for their support**

### Brought to you by



If you are interested in being part of the Taranaki Fringe Garden Festival, or wanting to advertise in our programme, please contact us.

[taranakigardentrust@gmail.com](mailto:taranakigardentrust@gmail.com)

The deadline for new garden applications for the 2022 festival is 27/11/2021

### Chairman

John Lucas

Mob 027 416 4131, Ph 06 755 2273

### Facebook

[www.facebook.com/TaranakiFringeGardenFestival](https://www.facebook.com/TaranakiFringeGardenFestival)

### Website

[www.taranakigardens.co.nz](http://www.taranakigardens.co.nz)

### Festival Organiser/Advertising

Anne Clough

[taranakigardentrust@gmail.com](mailto:taranakigardentrust@gmail.com)

Mob 021 450 770, Ph 06 752 7531

### Lost and found

Please contact us

by email or phone as listed.



# Real Gardens for Real People

## *Welcome to*

# Taranaki Fringe Garden Festival

### OUR STORY

The Taranaki Fringe Garden Festival is being presented for the 17th time in 2021. This year, we are excited to share with you more than 50 gardens throughout the region.

We often get asked why Taranaki presents two garden festivals at the same time. The easy answer is that we have so many gardens worthy of attention, but there's more to it than that.

In 2005 the Taranaki Garden Trust was formed to present real gardens created by real people. This is where we differ from the philosophy and focus of the parallel event. The gardens you will find in the Taranaki Fringe Garden Festival are unashamedly honest and real, and each garden tells an impressive story of passion, energy and effort.

We offer a large variety of gardens that range from those that are picture perfect to those that are practical and achievable. This spectrum of gardens are chosen by design. We want you to go away brimming with inspiration and the knowledge that you too can create your own garden of delight regardless of the time, money, or space you have to hand.

Just as important as the gardens are the gardeners behind them and the Trust seeks to celebrate their passion and achievement. That's why we encourage you to meet the gardeners, share their stories, and learn from their adventures.

We're committed to keeping things personal, and accessible. Entry to any of our gardens is \$2.00, as it was when we started 17 festivals ago. We acknowledge and thank all the supporters, volunteers, gardeners and others at the Fringe who have contributed their time and energy to what we do and to allow us to keep prices at that level.

Welcome to the 2021 Taranaki Fringe Garden Festival. We're incredibly proud to be different, and to have been so from the outset.

We thank you for your support and invite you to discover, share, and enjoy our real gardens for (and by) real people.

On behalf of the Taranaki Garden Trust.  
John Lucas, Chairman.



Photo credit: Mark Harris

## Listing Guide

LISTING NUMBER	LISTING NAME	LISTING COLOUR	LISTING MAP REF
48	<b>CAMTIKI COUNTRY LODGE</b>		<b>Opunake - Rural Map A</b>

**Mike and Colleen Starsmore**  
 692 Patiki Road, RD32, Te Kiri, Opunake  
 Colleen 027 485 6254 | Mike 027 522 2242  
 camtikicountrylodge@gmail.com  
 6.92 km from SH45, 2km from Eltham Rd

Established rural garden, (ex S&G Campbell) purchased in 2017. A sheltered garden of perennials, herbaceous plants, shrubs and mature trees. Features orchard, summerhouse, vegetables, pond and breathtaking views of Mt Taranaki. A quiet rural retreat setting. Opunake Lions café. Plants for sale. Campervans and buses welcome.

\$ 2pp  
 29<sup>th</sup> Oct - 7<sup>th</sup> Nov  
 9am - 3pm



## Taranaki Driving Times

New Plymouth to Hawera	60 minutes
New Plymouth to Opunake	55 minutes
New Plymouth to Waitara	20 minutes
New Plymouth to Stratford	35 minutes
New Plymouth to Inglewood	20 minutes
Stratford to Hawera	30 minutes
Hawera to Patea	20 minutes

## Feedback

We would love to have feedback about the festival gardens. If you have any comments to make please send them to:  
**The Garden Assessor**  
 204 Surrey Hill Road, R.D. 4, New Plymouth 4374  
 taranakigardentrust@gmail.com

**Thank you.**

## Listing Information

### GARDENS

All festival gardens have been assessed by an independent committee to ensure they meet our high standard. Enjoy the extraordinary splendour and variety in our beautiful gardens.

### PLACE OF INTEREST

These include artisan home studios which offer garden delights. You will also find handcrafted jewellery, paintings, sculptures, pottery, or take a ride on a locomotive along an historic stretch of railway.

**Look out for the blue stripes on their flags.**

### LISTING & FLAG COLOUR



**For garden locations, see maps page 23 - 28**

**Look for our orange flags displayed on the street side.**

## Key

- ENTRY FEE PER PERSON  
Children under 12 years free, unless otherwise stated
- OPEN DATES
- OPEN TIMES
- PLANTS FOR SALE
- WHEELCHAIR FRIENDLY
- TOILETS AVAILABLE
- REFRESHMENTS AVAILABLE
- BUS TOURS WELCOME
- BUS TOURS BY ARRANGEMENT



**CROSS HILLS**  
GARDENS + NURSERY

**VISIT OUR 18 ACRE DISPLAY GARDENS**

CHOOSE RHODOS & AZALEAS FROM OUR PLANT CENTRE  
 OR BUY ONLINE [crosshills.co.nz](http://crosshills.co.nz)



**CROSS HILLS GARDENS**  
**COUNTRY FAIR**  
 KIMBOLTON

Enjoy our Annual  
**COUNTRY FAIR**  
 20<sup>th</sup> NOVEMBER  
 180+ OUTDOOR  
 MARKET STALLS



**gardenedge**

**Garden Centre & Giftware Specialists**  
 OPEN 7 DAYS

Corner of Fantham Street & Waihi Road, Hawera  
 P: 06 278 8148 M: 027 443 6927 E: [gardenedge2010@gmail.com](mailto:gardenedge2010@gmail.com)



**1 GLASCROFT**

**Patea Map B**

**Julian and Olivia Shimmin**  
23 Scotland Street, Patea  
027 711 1828 | 027 242 6129  
jshimmin77@gmail.com  
300m from SH3

Bounded by stately pohutukawa's with 12 individual garden rooms on differing themes, including semi-formal borders, roses, orchard area and homage to a Victorian stumpy and tudor physic garden. Highlights include sculpture, rill 100+ rhododendrons. Based in a old garden 5 years into revival.

\$ 2pp  
28 29<sup>th</sup> Oct - 7<sup>th</sup> Nov  
9am - 5pm



**3 GABOT'S GARDEN**

**Hawera Map C**

**Alf and Bernie Christian**  
275 Glover Road, Hawera | 500m from SH3  
06 278 6379 | 027 775 6912  
bchristian@xtra.co.nz | Gabots Garden

Your hosts Bernie & Alf welcome you into our large town garden, made up of recycled bits & bobs to show you our little bit of paradise didn't cost a fortune: Ever popular landscape maples & fruit trees for sale plus lots of garden art & accessories made on site. Picnics welcome, come enjoy a bicky & a cupper supplied by Taranaki Ostomy club. Sorry no EFTPOS.

\$ 2pp  
28 29<sup>th</sup> Oct - 7<sup>th</sup> Nov  
8.30am - 6pm



**2 LITTLE ARDLUI**

**Hawera Map C**

**June and Hugh Hartwell**  
25 Wilson Street, Hawera  
06 278 3393 | hughhartwell2016@gmail.com

The next edition of our garden started from scratch 2020. Little Ardlui is a town house cottage garden with a myriad of colours and an abundance of flowers. Many of the old species came along with us and has flourished. There is also a raised vegetable garden, Model Ho railway on display, and craft sales.

\$ 2pp  
28 29<sup>th</sup> Oct - 7<sup>th</sup> Nov  
9am - 5pm



## ŌHAWE CREATIVE COLLECTIVE

**ART - CARVING - CRAFT - PLANTS - PRODUCE**

**ŌHAWE HALL** 8KM NORTH OF HAWERA, SH45  
BY THE BEACH STUNNING SCENERY, PICNIC PERFECT

**OPEN: 9AM - 4PM DAILY** DURING TARANAKI  
GARDEN FESTIVALS



# South Taranaki

A perfect weekend getaway  
for the whole family

Visit us to find out more:  
**South Taranaki i-SITE  
Visitor Information Centre**  
55 High Street, Hāwera  
(06) 278 8599  
visitorinfo@stdc.govt.nz

Beaches, world class surf spots, coastal walkways, award winning museums and gardens, indoor Aquatic Centre, boutique shopping, cafes, restaurants and so much more. Accommodation options ranging from luxury to well equipped campgrounds.

**What are you waiting for?  
Come and explore it yourself.**

**www.southtaranaki.com**



**Discover the beauty of our parks and reserves**

**Stratford District**  
in the heart of Taranaki  
stratford.govt.nz

**STRATFORD SCARECROW TRAIL**

**29<sup>TH</sup> OCTOBER TO 14<sup>TH</sup> NOVEMBER 2021**

**Jump on the Scarecrow Trail with your friends and family in tow. See how many scarecrows you can find to be in the chance to win prizes.**

**HAVE FUN EXPLORING STRATFORD AND GET SOME GREAT PHOTOS ALONG THE WAY!**

**FREE FAMILY ACTIVITY**

Please collect your map from the Stratford i-SITE  
**MORE INFORMATION**  
f/STRATFORDDISTRICTCOUNCIL

**4 JABULANI**

Hawera - Rural Map A

**Neda and Greg Howes**

490 Normanby Road, Okaiawa  
027 412 1825 | nedjika@gmail.com  
4.5km from SH45 / 8km from SH3

5 year old one acre garden in progress. Meander through pathways leading to interesting areas. Sunken entertainment area. Mounded gardens of flowering shrubs, roses, irises etc. Fernery and veg garden. Mountain views. Tea and coffee by donation to Breast Cancer. Plants and crafts for sale. Plenty of roadside parking. Bring your lunch and enjoy. No EFTPOS.

\$ 2pp  
29<sup>th</sup> Oct - 7<sup>th</sup> Nov  
9am - 5pm



**5 CAMELLIA COTTAGE**

Manaia - Rural Map A

**Jennie & Brian McNaught**

577 Manaia Road, Hawera  
06 274 9420 | 021 057 3439  
camelliacottagemanaia@gmail.com  
5km from SH45 (South Road)

A semi-rural garden with views of our amazing mountain. Full of gathered treasures, where fruit trees jostle with flowers and vegetables, and herbs nestle among familiar cottage favourites. All are grown with the wellbeing of our planet in mind. Donations to Hospice. Sorry no EFTPOS.

\$ 2pp  
29<sup>th</sup> Oct - 7<sup>th</sup> Nov  
9am - 5pm



**6 HOLLARD GARDENS**

Stratford - Rural Map A

Taranaki Regional Council  
1686 Upper Manaia Rd, Kaponga | 0800 736 222  
regional.gardens@trc.govt.nz  
www.hollardgardens.govt.nz

f HollardGardens in Hollardgardens

Established in the fertile rural landscape south of Taranaki Maunga by renowned plantsman Bernie Hollard in the 1920s, this property boasts a plant collection of national importance. It features many rhododendrons, unusual plants and offers delightful contrasts.

Hollard gardens has free guided walking tours during the festival at 2pm daily. Guided walking tours can be booked outside of the festival for a fee. Please let us know beforehand if you are bringing large groups during this busy time.

**What's happening:**

Fri 29 Oct - Sun 31 Oct. 10am - 4pm.

A metal sculpture exhibition with Taranaki locals Nathan Hull Sculpture and Destine Hull, The Hollard Centre.

Sun 7 Nov. 11am - 12pm.

Join Sue Rine for a free guided walk around Hollard Gardens and learn which common plants and weeds can complement your everyday dishes, some may surprise you. Meet at The Hollard Centre ready to leave at 11am.

Hollard Gardens is open all day every day. Free admission. It is owned and managed by the Taranaki Regional Council.

\$ FREE  
29<sup>th</sup> Oct - 7<sup>th</sup> Nov  
Open all day, every day





## 7 ENVIRONMENTAL PRODUCTS (NZ) LTD Stratford - Rural Map A

**Pennie Sands** "The Possum Factory"  
1103 Opunake Road, RD21, Stratford 4391  
06 764 6133  
pennie@envirofur.co.nz | www.envirofur.co.nz  
12km from main road.

Possum Factory  
We tan, manufacture and retail possum fur and leather products. We have an extensive range of possum rugs and pillows, fur scarves, hats and footwear. Exclusive fashion designed leather garments. Also stock possum merino knitwear.

**\$ FREE**  
28 29<sup>th</sup> Oct - 7<sup>th</sup> Nov  
Mon - Fri 9am - 5pm | Sat - Sun 10am - 4pm



## 11 REGAN HOUSE

Stratford Map E

**Wayne and Judith Gilmer**  
193 Regan Street, Stratford  
06 765 4189 | 022 412 3354  
contact@reganhouse.co.nz | www.reganhouse.co.nz  
1km from SH3

A well established property, English in style. The garden sits in an acre which surrounds a 1910 villa. The garden offers a range of mature plantings as well as many newer additions. Flat pathways take you through a variety of rooms, featuring a white garden summerhouse and wedding lawn, all with borders or beds of spring colour.

**\$ 2pp**  
28 29<sup>th</sup> Oct - 7<sup>th</sup> Nov  
9am - 5pm



## 8 THE VILLAGE GALLERY

Eltham Map D

166 High Street, Eltham  
06 765 6067 | 027 348 6826  
postiehitcock@gmail.com  
www.elthamvillagegallery.org.nz

"The Potters" Margaret Foley, Robyn Smaller and Donna Hitchcock have been exhibiting together for over a decade. Mainly handbuilt, quirky pottery and decorative mixed media pieces for the home and garden. Gallery shop also open with members work for sale.

**\$ FREE**  
28 29<sup>th</sup> Oct - 7<sup>th</sup> Nov  
10am - 3pm



## 9 ROTOKARE SANCTUARY

Eltham - Rural Map A

**Rotokare Scenic Reserve Trust**  
Sangster Road, Rawhitiroa  
06 764 8500 | contact@rotokare.org.nz  
14km from SH3, turn at Eltham Library

Pristine 230ha pest-free, ecosanctuary, with 17ha lake and extensive wetland. View native flora and fauna found nowhere else in Taranaki. Camping on-site, suggested donation \$10pp/night. Check out our facebook page for tours and talks; bookings essential. No pets, plants or pests to come on-site.

**\$ FREE**  
28 29<sup>th</sup> Oct - 7<sup>th</sup> Nov  
Open all day, every day



## 10 ABSTRACT SIGNS GARDEN ART

Stratford Map E

**Sharon Mackie-Langton**  
59 Fenton Street, Stratford 4332  
06 765 8066 | 021 205 7099  
sharon@abstractsigns.co.nz  
www.abstractsigns.co.nz | Facebook AbstractSigns

MORE THAN YOU'D EXPECT.  
My outdoor/indoor art gallery has weather proof photos on corrugated iron and large panels. CNC plasma cut steel art and fireplaces. CNC routed wall art, garden signs, and more.

**\$ FREE**  
28 29<sup>th</sup> Oct - 7<sup>th</sup> Nov  
9am - 5pm



## ENVIRONMENTAL PRODUCTS (N.Z) LTD THE POSSUM FACTORY



Tan, manufacture & produce  
Possum Fur & Leather products,  
Possum Merino Knitwear sold in  
our retail store.

**Open daily**  
Monday - Friday 9am-5pm  
Saturday - Sunday 10am-4pm



**1103 Opunake Road, Mahoe, Stratford**  
(10 mins from Stratford on the way to Dawson Falls & Holland Gardens) Ph/Fax: 06 764 6133  
Email: pennie@envirofur.co.nz Website: www.envirofur.co.nz



**12 MOSEN'S GARDEN**
**Stratford Map E**
**Heather and Earl Mosen**

 25 Pembroke Road, Stratford 4332  
 06 765 8538 | 1km from SH3

A mature one and a half acre town garden with steps leading down to a stream and an extensively planted bog garden. Primulas, irises, hostas, Solomon's seal etc. On to shade gardens featuring ligularias, corydalis and convallaria surrounding a pond. Plants for sale. Open from Labour Weekend until the end of the festival. Pets welcome.

\$ 2pp  
 28 23<sup>rd</sup> Oct - 7<sup>th</sup> Nov  
 9am - 5pm


**16 THE POTTERS SHED**
**Inglewood Map F**
**Brian and Patti Cocker**

 34 Brookes Street, Inglewood  
 06 756 7267 | 021 522 902  
 briancocker749@gmail.com

f ThePottersShedInglewood

Less than 0.5km from SH3, Inglewood

We would love you to visit us in our pottery studio to view our original pieces for the home and garden. View our unique and colourful creations in the adjacent gallery and nestled amongst the trees and plants in our garden. In particular, don't miss the totems, cute caravans, boats and flowers.

\$ FREE  
 28 29<sup>th</sup> Oct - 7<sup>th</sup> Nov  
 9am - 5pm


**13 RIDGETOPP**
**Inglewood - Rural Map G**
**Janet Schultz**

 296 Lower Norfolk Road, Inglewood  
 06 7569153 | 027 2552868  
 ridgetop@primowireless.co.nz

Long-established country garden featuring rhododendrons, camellias, maples and 90-year-old wisteria and magnolia. Enter over the Waitepuke Stream along an avenue of trees and through the archway by the Wedding Cake Tree into garden rooms over three levels, with roses, perennials, annuals, sculptures and mosaics.

\$ 2pp  
 28 29<sup>th</sup> Oct - 7<sup>th</sup> Nov  
 9.30am - 5pm


**17 CREEKSIDE GARDEN**
**Inglewood - Rural Map G**
**Liz and Leo Bennett**

 48 Lepper Road Upper, Inglewood  
 027 466 2939  
 bennetts2010@live.com  
 0.5km from SH3

Relax & wander around our county garden. See a mix of maples, hostas, rhodos, roses and many established plantings. Check out the lake, waterwheel and walk along the creek among native trees. An acre of gardens creating a relaxed and friendly atmosphere. This garden featured in the NZ House and Garden Jan 2021.

\$ 2pp  
 28 29<sup>th</sup> Oct - 7<sup>th</sup> Nov  
 9am - 5pm


**14 DONDO**
**Inglewood - Rural Map G**
**Sias and Lloyd**

 137 Lower Durham Road, Inglewood  
 06 756 6357 | 027 388 5668  
 siashoffman@yahoo.com | 1.37km from SH3

A 1/4 acre garden of clean lines and bold spaces, colour contrasts, mirror images and vistas. This formal garden was designed to display a collection of roses, maples and variety of plants in various rooms. There is the white garden, Japanese garden, rainbow garden and the vege patch. The rooms are divided by a number of hedges of various shapes and sizes. Enjoy!

\$ 2pp  
 28 29<sup>th</sup> Oct - 7<sup>th</sup> Nov  
 9am - 5pm


**18 JERSEY LANE**
**Lepperton - Rural Map G**
**Faye and Ivan Phipps**

 651 Mountain Road, SH3A, Lepperton  
 06 752 0878 | 021 161 7245  
 ivan.faye@xtra.co.nz

Come and explore this country garden with lots of hidden treasures including a children's playground, vege garden and orchard. Bring a picnic, relax and enjoy the peace and quiet and friendly atmosphere either in the garden or the fairy lit shed. Campervans welcome to stay. Drive in off-road parking.

\$ 2pp  
 28 29<sup>th</sup> Oct - 7<sup>th</sup> Nov  
 9am - 5pm


**15 WINDSOR VIEW**
**Inglewood Map F**
**Noel and Rose King**

 46 Maire Street, Inglewood  
 06 756 8582 | 021 239 1777  
 nannnarose@xtra.co.nz  
 1km from SH3

This one acre garden has clean lines and open space featuring rhodos, azaleas, hostas, irises and hydrangeas in a relaxed and friendly atmosphere. Added attractions are a rustic garden cottage, bridge to somewhere and a man shed with cars and models on show plus many rustic garden features. Plenty of sheltered places to sit and enjoy the rural outlook and listen to birdsong.

\$ 2pp  
 28 29<sup>th</sup> Oct - 7<sup>th</sup> Nov  
 9am - 5pm


**19 OLDE THYME**
**Lepperton Map G**
**Keryn Jury**

 8 Smith Street, Lepperton  
 06 752 0172 | 027 414 3839  
 kerynjury@outlook.com | f Olde-Thyme-Garden  
 1km from SH3A

Small and unassuming from the road, this garden is packed full of interest. An abundance of flowers, fragrance and fruit, this garden shows how to make the most of a quarter acre space. Old fashioned charm with a creative twist. An interactive wonderland for all ages.

\$ 2pp  
 28 29<sup>th</sup> Oct - 7<sup>th</sup> Nov  
 9am - 4pm





**20 MILLFIELD****Lepperton - Rural Map G****Keith and Yvette Lowe**

32 Te Arei Road East, Lepperton  
 06 752 0171 | 027 627 2561 | 027 304 2933  
 millfield@infoegen.net.nz  
 1km from SH3A

A rural garden with mountain outlook. Mixed plantings, some formal, some cottage, a hosta collection, rose gardens and orchard. Surrounded by mature trees and clematis covered fences. Various unusual Daphne throughout the garden. Entry proceeds to charity.

\$ 2pp  
 28 29<sup>th</sup> Oct - 7<sup>th</sup> Nov  
 9am - 5pm

**21 WAITARA RAILWAY PRESERVATION SOCIETY****Waitara Map H****Enquiries: Derek Baker**

Queen St, Waitara (by New World Supermarket)  
 021 159 4361 | waitararailway@gmail.com  
 Enquiries: www.waitararailway.org.nz

Ride Taranaki's heritage railway, from Waitara to Lepperton return. Trains depart 11am every day of the festival from Queen Street, Waitara. Round trip takes 65-75 minutes. Tickets as you board.

\$ Adults \$20, child 5-15 \$10, under 5 free;  
 family 2 adults and up to 2 children \$40.  
 Cash only please, no cards.

28 29<sup>th</sup> Oct - 7<sup>th</sup> Nov  
 11am every day

**22 DOVEHAVEN****Waitara Map H****Nicola and Murray Fabish**

101 Centennial Ave, Waitara  
 027 303 0397 | dovehaven\_wt@xtra.co.nz  
 1km from SH3

Wander through my charming cottage garden which is packed with many old fashioned flowers. Take some time to relax and enjoy homemade refreshments and baking on vintage crockery. Plants and crafts available for purchase. Sorry no EFTPOS. Proceeds to Taranaki Community Rescue Helicopter.

\$ 2pp  
 28 29<sup>th</sup> Oct - 7<sup>th</sup> Nov  
 9am - 4pm

**23 SURREY'S ROCK GARDEN****Waitara Map H****Irene and Ian Surrey**

11 Cracroft Street, Waitara 4320  
 06 754 7064 | 027 309 4425 | surreyan8@gmail.com  
 Approx 0.5km from SH3.

We grow and sell a large variety of succulents. We welcome you to share our love of these plants. Come and browse and purchase from our large shade house. Wander through our rock garden to see how they can be grown. Wooden painted pukekos and a great range of children's wooden toys also for sale. Chilled water and sweets available.

\$ DONATION  
 28 29<sup>th</sup> Oct - 7<sup>th</sup> Nov  
 9am - 4.30pm

**24 KAIRAU LODGE AND VINEYARD****Brixton Map G****Jocelyn & Colin Clarke**

48 Kairau Road West, New Plymouth  
 06 755 1597 | 027 555 4131  
 info@kairaulodge.co.nz | www.kairaulodge.co.nz  
 500m from SH3A

Enter down the driveway with hornbeam hedge, iceberg roses and 40 year old kauri trees interspersed with pohutukawa. Enjoy spacious lawns, formal rose, knot, fleur de lis and Zen gardens. Appreciate our Taranaki Mountain Road Rosé, Sauvignon Blanc and Pinot Noir wines which are available to purchase. Morris Dancing and musicians on Saturdays at 1pm. Tea tasting daily.

\$ 2pp  
 28 29<sup>th</sup> Oct - 7<sup>th</sup> Nov  
 9am - 5pm

**25 WINDSONG****Bell Block - Rural Map G****Marion and Gavin Struthers**

82 Airport Drive, Bell Block, New Plymouth  
 06 755 0168 | 021 134 5293  
 windsongorchard82@gmail.com  
 820m from SH3

Amidst an avocado orchard, our house snuggles cosily into a picturesque frame of surrounding trees, including a small bush walk. A large country garden with old-fashioned plantings featuring roses, magnolias and maples all blending together to create a peaceful haven. An archway, a pond and water feature add to the feeling of gentle tranquility. Motorhomes welcome to stay.

\$ 2pp  
 28 29<sup>th</sup> Oct - 7<sup>th</sup> Nov  
 9am - 5pm



# KAIRAU

## LODGE & VINEYARD

### Home of Mountain Road Wines

Come and enjoy our local wine with tasting of our own Mountain Road Rosé, Sauvignon Blanc and Pinot Noir.  
 Wines are available to purchase.

**Magic T**

Artisan Tea  
 Tasting  
 Daily at 10am-2pm  
 www.magict.co.nz

Morris Dancing  
 and Musicians  
 on Saturdays  
 at 1pm



48 KAIRAU ROAD WEST, NEW PLYMOUTH  
 WWW.KAIRAULODGE.CO.NZ 06 755 1597



## 26 CHAPMAN GARDEN

Bell Block Map I

**Judy Chapman**

3 Nadine Stanton Drive, Bell Block  
06 755 0439 | 027 475 5150  
judychapman@slingshot.co.nz

A small town garden, very compact with a great use of space. This garden has interesting landscaping creating formal areas in parts along with a water feature. There is a variety of plants, maples, roses, hostas, ligularias, hellebores, etc. Also a very productive produce area. This garden is always changing and will surprise you.

\$ 2pp  
29<sup>th</sup> Oct - 7<sup>th</sup> Nov  
9am - 5pm



## 27 PAI RAWA ATU (The Perfect Place)

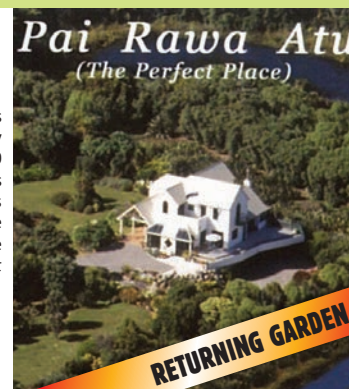
Bell Block Map I

**Allan and Lorraine Inch**

10 Ludlow Place, Bell Block | 06 755 1515  
raylinchnz@gmail.com | 2km from SH3

Garden is made up of three town sections (three quarters of an acre in all). Every tree and shrub on the property has been hand planted in the last thirty years about 8000 total made up of about 100 vireyas, 350 different camellias many palms and cycads plus hundreds of clivias and orchids make up what I would call a mans cottage garden. We are fortunate to be next door to a Council wildlife Park set aside for varieties of bird life. Pai Rawa Atu means The Perfect Place or Spot and I think you will all agree it is just that.

\$ 2pp  
29<sup>th</sup> Oct - 7<sup>th</sup> Nov  
9am - 5pm



## Come in & experience



### We Know Gardens



- Fantastic Plant Selection
- Working Edible Garden
- Undercover All-Weather Shopping
- Inspirational Displays
- Unique Giftware

**P: 06 755 2487** | **www.bigjims.co.nz** | **E: info@bigjims.co.nz**  
**OPEN 7 DAYS** | 8.30am - 5.00pm | 1217 Devon Rd, NP

Taranaki's Award Winning Garden Centre



## Ready, set, grow

**Mitre 10**  
**New Plymouth**  
305-307 St Aubyn Street  
Phone 758 0520

**Mitre 10 MEGA**  
**New Plymouth**  
5 Vickers Road, Waiwakaiho  
Phone: 759 4399

**MITRE 10** | **MITRE 10 MEGA**

## TRANSFORM YOUR OUTDOOR SPACE

18 Manadon St, Spotswood Mon - Fri, 7.30am - 5pm • Sat 8.30am - 1pm • Sun closed  
25 Oropuriri Rd, Waiwhakaiho Mon - Fri, 7.30am - 5pm • Sat 8.30am - 3pm • Sun 9am - 1pm

**FILL YOUR TRAILER OR CALL AND WE CAN DELIVER TO YOU**

**P. 06 755 0013**  
**W. www.jonesquarry.co.nz**



**28 TAYLOR-MADE GARDENS**

Bell Block Map I

**Ian and Sue Taylor**19 Dolphin Parade, Bell Block 4312  
06 755 2312 | 027 817 5109 | sueandtayles@xtra.co.nz

We welcome you to our tropical garden, which consists of a large variety of succulents, palms, cycads and over 400 bromeliads. We also have a variety of airplants, some of which you may purchase. We invite you to a cuppa as you wander around. Bromeliad, succulent, airplant and other plant sales during the festival and most days over summer. Ample street parking. Sorry no EFTPOS. Bus tours welcome.

\$ 2pp  
28 29<sup>th</sup> Oct - 7<sup>th</sup> Nov  
8.30am - 4.30pm

**29 ORCHARD INN**

Bell Block - Rural Map G

**Aileen and Kev Taylor**136 Paraiti Road, Bell Block, New Plymouth  
06 755 0450 | 027 437 7783 | aileenkevt@xtra.co.nz  
1.5km from SH3

We would love you to come, wander around and enjoy our peaceful rural garden. Art Deco home blends into established surroundings with a mixture of old and new plantings - large trees, hostas, maples, ligularias, solomon seal, old perennials, vegetable garden, orchard. Plenty of parking. Plants for sale.

\$ 2pp  
28 29<sup>th</sup> Oct - 7<sup>th</sup> Nov  
9am - 5pm



# The Christmas Village

**Your Specialty Christmas Shop**

The Christmas Village is full of beautiful new items, stunning new season's trees & fun displays. Long term layby available & loyalty cards. 'Believe In The Magic'

**Open 7 Days a week during the garden festival**

SHOP OPEN 10am - 4pm Sat & Sun ~ 10am - 2pm Monday

\* Viewing By Appointment Available Weekdays, All Year!




Believe in the magic

**63 Egmont Rd, NP** From Oct 1st - **OPEN 7 DAYS!**

~ 2 mins from Palmers Garden Centre [f The Christmas Village](#) [i The\\_Christmas\\_Village](#)

# Welcome to Palmers

Palmers New Plymouth welcomes visitors for the Taranaki Fringe Garden Festival 2021. Include our stunning garden centre in your Festival itinerary.

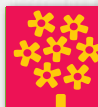
## CAFÉ BOTANNIX

Serving breakfast through to afternoon tea, Cafe Botannix is the ideal setting to stop for a delicious meal, made in house with seasonal garden produce. Our unique garden setting and covered outdoor courtyard is the perfect place to relax after meandering through the garden centre.

Try our Botannix Stack, Sweet Crepes or choose from our range of sweet treats.



Corner Katere and Devon Road, Fitzroy, New Plymouth  
Ph: 06 758 7455 Open 7 days from 8.30am



**Palmers**



## 30 TOWNSEND RETREAT

Bell Block - Rural Map G

**Bertie Burleigh**

11 Townsend Road, Bell Block, New Plymouth  
Bertie 027 626 5944 | bertieb@xtra.co.nz  
2km from SH3

Country retreat full of mature trees with lots of underplanting and secret pathways. A full lifestyle experience, caged birds, visiting peacocks. A full adventure of colour and vibrancy. Developments of new areas on-going, English themed and beehives. Plenty of off road parking. Devonshire teas and scones all week.

\$ 2pp  
28 29<sup>th</sup> Oct - 7<sup>th</sup> Nov  
9am - 5pm



## 31 RIVERBEND

Egmont Village - Rural Map G

**Maureen and Danny Bonner**

67 Tape Road, Hillsborough, New Plymouth  
06 755 3302 | 027 424 1020  
f RiverbendGardenNewPlymouth

Come relax in our large country garden beside the Mangoraka Stream, take time to wander around, take the steps to the dell or sit by the jetty. Native and deciduous plants with large shady trees. The log cabin will have homemade goodies for sale. A popular garden for weddings and special events.

\$ 2pp  
28 29<sup>th</sup> Oct - 7<sup>th</sup> Nov  
10am - 4pm



## CRAIGMYLE EPIPHYLLUMS

New Plymouth Map J



5 Portland Drive, Highlands Park, New Plymouth.

Your chance to view New Zealand's largest display of Epiphyllums.

PLANTS FOR SALE

Refer to Garden Number 32

## 32 CRAIGMYLE EPIPHYLLUMS

**Yvonne and Andrew Brunton**

5 Portland Drive, Highlands Park, Merrilands  
06 759 1466 | 027 383 5909  
jungleflower@windowslive.com  
100m from SH3 (Junction Road)

Oldest and largest collection of NZ's hybridized rainforest cacti (Epiphyllum) rarely open to the public. Also flower garden of roses, rhodos, irises, hostas and numerous other plants. Large veg garden and fruit trees. Many plants for sale, epiphyllums, roses, oriental lilies, bearded iris, Siberian iris, day lilies, clivias, hostas plus lots more.

\$ 2pp  
28 29<sup>th</sup> Oct - 7<sup>th</sup> Nov  
9am - 5pm



# Think new chapter, not the end of the story.

When it's time for a change, make it a great one.

At Summerset, we do everything to ensure our residents lives read like a good book. Where every day is an opportunity to turn a new page and see where their story might take them. Think this sounds like you or someone you love?



Summerset Retirement Villages | Call 0800 SUMMER or visit [summerset.co.nz](https://summerset.co.nz)





# Explore Taranaki!

## See your local experts



We can help with  
accommodation,  
activity and travel  
bookings.



New Plymouth i-SITE

Puke Ariki Museum and Library

Wind Wand

Coastal Walkway



Open 7 days a week, 10am - 5pm | 65 St Aubyn Street | 0800 639 759 | [i-site@npdc.govt.nz](mailto:i-site@npdc.govt.nz)

Puke Ariki



Te Kaunihera-ā-Rohe o Ngāmotu  
New Plymouth  
District Council

# Koru Galleries



## Koru on Koru

Sculpture Garden & Gallery

283 Koru Rd Oakura

Place of interest Fringe garden festival no 39

Local artists will be available  
at varying times onsite

Open 28<sup>th</sup> October - 7<sup>th</sup> November  
9am - 4pm or by appointment

Suzan Kostanich - Fabric Artist  
Lester Earl - Contemporary Painter  
Donna O'Donaghue - mixed media artist  
Volker Hawighorst - Artist  
Maria Brockhill - Ceramacist  
Renate Verbrugge - Sculpture  
Renate plans on working on site during festival

## Koru on Devon

Contemporary Gallery

89 Devon St East New Plymouth

Taranaki Garden Festival Exhibition

Opening 29<sup>th</sup> October

Linda Barbour - Ceramacist

Koru on Devon Artists

Open 10am - 3pm, Wed - Sun or by appointment



## 33 TUPARE

### New Plymouth Map J

Taranaki Regional Council  
487 Mangorei Rd, New Plymouth | 0800 736 222  
regional.gardens@trc.govt.nz | www.tupare.nz

f Tupare in tuparegardens

Tupare is an Arts and Crafts-inspired property established in 1932 by the Matthews family. Sculpted into a hillside above the Waiwhakaho River, it features a Chapman-Taylor house set in the grounds with secluded garden rooms, elegant borders and majestic trees.

Tupare has free guided walks during the festival at 2pm daily and free house tours half-hourly from 9.30am - 12.30pm. The mobility vehicle, available for less-able guests, runs before and after each house tour only. Please let us know beforehand if you are bringing large groups during this busy time.

Guided walks and house tours can be booked privately outside of the festival on the website for a fee.

#### What's happening:

Sat 30 Oct - Sun 31 Oct, 9.30am - 4pm.

Taranaki Symphony Orchestra and Ensembles perform on the tennis court. Tea and home baking available to purchase.

Mon 1 Nov - Sun 7 Nov.

The Shaker Tin will be serving fresh coffee, smoothies and treats.

Sat 6 Nov - Sun 7 Nov. 10am - 4pm.

An Art Exhibition with local Taranaki artist Ella Volino in The Cottage.

Tupare is open all day every day. Free admission. It is owned and managed by the Taranaki Regional Council.

\$ FREE  
28 29<sup>th</sup> Oct - 7<sup>th</sup> Nov  
Open all day, every day



## 34 BUSHVIEW GARDENS

### New Plymouth Map J

Elaine Schreiber

9 Hunter Place, Merrilands, New Plymouth 4312  
06 758 3278 | 027 354 5136  
e.schreiber@xtra.co.nz

A lovely background of our mountain and a view over the bush gives my garden a feel of space in town. I welcome you all to wander and share this and the garden with me. The rooms are full of colour with a large variety of treasured plants of yesteryear and present day. Awesome garden art for sale.

\$ 2pp  
28 29<sup>th</sup> Oct - 7<sup>th</sup> Nov  
9am - 5pm (close 3pm Fri 29<sup>th</sup> Oct)



## 35 SEABROOK

### New Plymouth Map J

Debbie and Buzz Campbell

7 Victoria Road, New Plymouth  
06 757 2436 | 021 2500 835  
debbuzzc@hotmail.com

Our quarter acre garden is 6 minutes walk from downtown New Plymouth and complements our Heritage "B" home "Seabrook". Nestled beside the shelter of Pukekura Park and the water wheel, our garden includes a stream, bush, trees, perennials, roses and annuals. Parking in lane and extra parking up Victoria Road hill. Cream teas on Sat 30<sup>th</sup> & Fri 5<sup>th</sup>, \$7.50/head. Proceeds to Hospital Chaplaincy. Picnics welcome.

\$ 2pp  
28 29<sup>th</sup> Oct - 7<sup>th</sup> Nov  
9am - 5pm



## 36 THE HIDDEN GARDEN

### New Plymouth Map J

Rosemary and John Lucas

10B Long Place, Frankleigh Park, New Plymouth  
027 475 5233 | 027 416 4131  
villaheights@xtra.co.nz

Welcome to our secluded private garden with a cascading hillside set on a quarter acre. Newly formed since Jan 2020, our hidden paradise offers bright bold colour with an abundant mixture of plants, shrubs, trees and a veg garden. On both Sat/Sun's we offer Devonshire Teas with proceeds going to Breast Cancer. Plants for sale. Parking on roadside.

\$ 2pp  
28 29<sup>th</sup> Oct - 7<sup>th</sup> Nov  
9am - 5pm



## 37 KOWHAI

### New Plymouth Map J

Neil and Linda

92 Ridgewood Drive, New Plymouth | 027 447 4078  
gardens.org.nz/taranaki-gardens/kowhai

This well-established 5 Star garden brings you a streamside walk, hillside plantings, fern dells & flat expanses where bird life abounds. Easy paths wind through native flora large & small, full of contrasting foliage, extensive collections of Hosta, Clivia & many Maples. Bromeliad, orchids & garden art feature throughout. 850+ rhododendrons & azaleas provide a wonder of subtle to blazing colours. 3 mixed orchards, a large veg garden & an enclosed berry house bring special points of interest. Flat parking on the roadside. Large groups & picnicker's welcome.

\$ 2pp  
28 29<sup>th</sup> - 31<sup>st</sup> Oct & 5<sup>th</sup> - 7<sup>th</sup> Nov  
9.30am - 4pm other times by arrangement



## AlleyCat Pottery

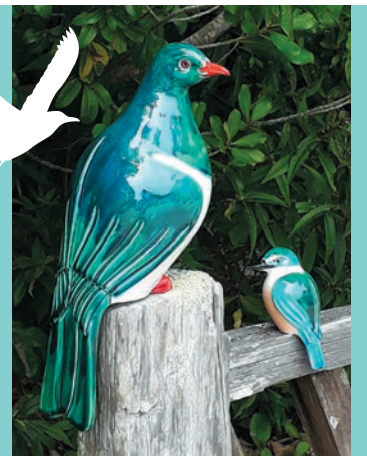
This year Suzanne's birds are perched at  
**KINA GALLERY**

*Kererū, Kingfisher, Tūi, Fantail, Ruru and Seagulls.*



Open 7 days  
101 Devon St West  
06 759 1201  
www.kina.co.nz

**KINA**  
NZ DESIGN + ART SPACE



## New Plymouth City Sounds Choir and Katikati Mural Town Singers

Invite you to a

## Garden Festival Concert

30 October, 7.30pm

St Andrews Church, Liardet Street, New Plymouth.

Tickets \$15pp (\$2 discount off 1 ticket with this advertisement)

Door Sales – Cash only School aged children free

Bring extra cash for our **Garden Basket Raffle Tickets - \$2**



**38 SHEDOU PALMS**

New Plymouth Map J

**Sheri and Doug**

145A Barrett Road, Whalers Gate, New Plymouth

Sheri 027 406 0261 | Doug 027 571 0963

shedoupalms@gmail.com

1.5km from SH3

Our subtropical oasis with palms and thousands of bromeliads displayed on 1400 sqm section. Creativity of pathways, boardwalks and a stunning new rock waterfall. Full of vibrant colours in our hidden tropical paradise. You surely will be impressed. Plants for sale and EFTPOS available. Wheelchair access top garden only. Buses Welcome.

\$ 2pp

29<sup>th</sup> Oct - 7<sup>th</sup> Nov

9am - 4.30pm



**Shedou Palms**  
Palm & Bromeliad Nursery



**FESTIVAL HOURS 9AM - 4.30PM DAILY**  
**NORMAL HOURS, GARDEN TOURS**  
**AND SHOP OPEN BY APPOINTMENT**

**145A Barrett Road • New Plymouth**  
**Sheri 027 406 0261 • Doug 027 571 0963**  
**shedoupalms@gmail.com**

**NPR**  
NEW PLYMOUTH  
**RACEWAY**

**Action-packed Racing | Exclusive Events**  
**Your Entertainment Destination**

[newplymouthraceway.co.nz](http://newplymouthraceway.co.nz)

## NEW PLYMOUTH CACTUS & SUCCULENT SOCIETY SHOW SPECTACULAR



**Sat 30th Oct & Sun 31st Oct, 9.30am - 4pm**

Come and view these unusual plants and have a chat to club members. Amazing variety of plants for sale. Off road parking.

**ENTRY: \$2pp**



**LOCATION:** Foundation of the Blind Hall  
131 Vivian Street, New Plymouth 4310

**1st WEEKEND ONLY**

**Maurice Finnerty 027 2011 930**  
[mauricefinnerty1936@gmail.com](mailto:mauricefinnerty1936@gmail.com)

## FERNERY AND DISPLAY HOUSES

We were on the fringe once  
– almost a century later  
we're at the green heart  
of New Plymouth.

Walk through history at the Fernery  
and Display Houses, Pukekura Park.

Fernery and Display Houses open 8.30am to 4pm daily.

Entry is via the Rogan Street gates.

**FREE ENTRY**



39

**KORU ON KORU  
SCULPTURE GARDEN & GALLERY**

Oakura Map K


**Fay Looney**  
283 Koru Road, RD4, Oakura 4374  
06 752 7807 | 021 410 030  
faylooney@xtra.co.nz | www.faylooney.com  
2.8km from SH45

This historical location situated in the old Koru village celebrates Contemporary Art in a purpose built studio situated amongst a warm and cheerful cottage garden surrounded by examples of original plantings by early settlers. Garden features, nikau palms, king ferns, camellia's. Painting, photography, sculpture, felting and pottery exhibition hosted by artists.

\$ FREE

28 29th Oct - 7th Nov

9am - 5pm or by arrangement



40

**ART BY THE SEA STUDIO**

Oakura Map K

**Margaret Scott**  
58 Messenger Terrace, Oakura  
06 752 1116 | 021 130 9200  
artbythesea@xtra.co.nz | www.margaretscott.co.nz

Art by the sea studio is set in a coastal tropical garden in Oakura near the sea. Artist, Margaret Scott's paintings reflect her garden and the beautiful Taranaki environment, which provides an abundant resource for her creative ideas. Her studio has a large range of originals, prints, books and cards. Studio open all year by appointment.

\$ FREE

28 29th Oct - 7th Nov

9.30am - 5pm



EUCY

TREE CARE & LANDSCAPES

Technical Tree Pruning & Dismantling

Garden Landscaping & Maintenance

Plant Selection & Supply

Tree Health & Structural Inspections

Professional Advice

From Qualified Arborists

FREE QUOTE & CONSULTATION

T: 022 658 5056

E: mattdillon.eucy@gmail.com

41

**RINGCRAFT MOANA JEWELLERS**

Oakura Map K

**Rob Wright**  
109 Surrey Hill Road, Oakura 4374  
06 752 7772 | info@ringcraftmoana.com  
www.ringcraftmoana.com  
2km from SH45.

Step into our large goldsmith studio and operating workshop. Watch how gemstones are set and metals are bent into jewellery. Afterwards you can enjoy our bordering flax walk.

\$ FREE

28 29th Oct - 7th Nov

9am - 5pm



A global phenomenon, with images and stories from across the world, *Wildlife Photographer of the Year* is the longest running and most spectacular photography event of its kind.

**14 August - 14 November 2021**

Free entry, open daily 10am – 5pm

Puke Ariki



© Arshdeep Singh

**WILDLIFE  
PHOTOGRAPHER  
OF THE YEAR**





# Ōākura arts trail

www.oakuraarts.co.nz

## OPEN STUDIO WEEKENDS

30/31st Oct & 6/7th Nov 2021

10am - 4 pm

Look for the blue & orange flags!

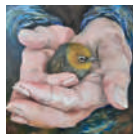


## MEET AND BUY DIRECT FROM THE ARTISTS

**1 KRIS WHITE**  
**KRIS WHITE ART & DESIGN**  
 Bright bold artwork with the WOW factor.  
 851 South Rd (SH45) Ōākura



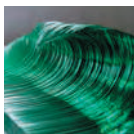
**6 MARGARET SCOTT**  
**ART BY THE SEA STUDIO**  
 Acrylic painting, mixed media and watercolours, prints and cards.  
 58 Messenger Tce, Ōākura



**11 SALLY LAING**  
**JEWELLERY AND ENAMEL**  
 Maker and tutor. Silver and enamel jewellery, silversmithing and workshops.  
 108A Wairau Rd, Ōākura



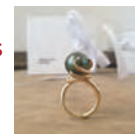
**2 RICHARD LANDERS**  
**THE GLASS GALLERY**  
 Stained, leaded and sculptural glass with garden trail.  
 143 Croydon Rd, Ōmata



**7 LIZZY MCNAUGHT**  
**INSPIRED ART DESIGN**  
 Hand drawn & painted art. Home decor, gifts & furniture art.  
 4 Mallinder Place, Ōākura



**12 RINGCRAFT MOANA**  
**RINGCRAFT MOANA JEWELLERS**  
 Manufacturing jewellers Rob Wright and Belinda Lubkoll.  
 109 Surrey Hill Rd, Ōākura



**3 HALL OF DESIGN**  
**DESIGN STUDIO + GALLERY**  
 Presenting contemporary exhibitions, events and workshops.  
 1139 South Road, Ōākura



**8 BRIAN CLARK**  
**STUDIO HARMONIC BLUE**  
 Diversity of media, paintings, prints, & sculpture by local Artist/Surfer.  
 6 Mallinder Place, Ōākura



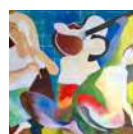
**13 LISA NEWSOME**  
**PAINTINGS**  
 Capturing a moment in paint. Eclectic mix of subjects in acrylic/mixed media/oils.  
 44C Kaitake Rd, Ōākura



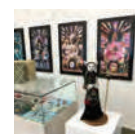
**4 ROSE PETTERSON**  
**WILDROSE DESIGN**  
 Mixed media artist. Sculpture, 3D printed objects, Painting.  
 22 Dixon St, Ōākura



**9 JOHN NEWTON**  
**JOHN NEWTON PAINTING**  
 Variety of acrylics and oils.  
 10 Russel Drive, Ōākura



**14 LUMEN GALLERY**  
**LUMEN STUDIOS & GALLERY**  
 Artist studios, exhibitions, workshops, weaving, cards, prints & jewellery.  
 1729 South Rd, Tataraimaka



**5 ROSS BENNETT**  
**CONTEMPORARY ART**  
 Striking paintings of varied styles and sizes.  
 66 McFarlane St, Ōākura



**10 LINDA BARBOUR**  
**CLAY PLAY**  
 Experimenting with clay, glaze, colour & texture to create garden sculpture, hand built & thrown forms.  
 34A Wairau Rd, Ōākura



**15 OKURUKURU**  
**THE VINEYARD BISTRO**  
 Exhibition of Ōākura Arts Trail Artists and serving exquisite European inspired cuisine.  
 738 Surf Highway 45



For media enquiries contact Arts Trail convenor Allan Day 027 805 5424



A European inspired Bistro where everything is made in house with love, passion and garnished with spectacular Coastal views.



Photo Credit: Jaap Loevendie

738 Surf Highway 45 | Phone For Reservations (06) 751 0787



## 42 PUKEITI

### Oakura - Rural Map A

#### Taranaki Regional Council

2290 Carrington Rd, New Plymouth | 0800 736 222  
regional.gardens@trc.govt.nz | www.pukeiti.govt.nz

f PukeitiGardens in Pukeiti\_nz

The Rainforest Eatery is open 8.30am - 4pm during the festival. Over seven decades Pukeiti has built up one of the world's biggest and most distinct collections of rhododendrons and other exotics, their rich colours bursting into life against a backdrop of lush native rainforest. The 360 ha property also boasts an absorbing range of free family-orientated activities, walking tracks for all fitness levels, a modern visitor centre, and various accommodation options including the Lodge Studio and Piwakawaka Family Hut which can be booked on the website.

Pukeiti has free guided walking tours during the festival at 2pm daily as well as mobility vehicle rides for less-able visitors on the hour from 10am - 1pm. Please let us know beforehand if you are bringing large groups during this busy time.

#### What's happening:

Fri 29 Oct - Sun 31 Oct, 10am - 4pm.

An open-air bird-life exhibition by Anna Scott and Shining Peak Brewery tasting in The Keiller Garden.

Fri 5 Nov, 6pm - 9pm.

Dinner in the Pukeiti Lodge, Celebrate spring in an iconic and historic location with delicious Italian inspired dishes served by head chef Graeme from the Rainforest Eatery. Bookings are limited and are booked directly at rainforest.eatery@trc.govt.nz

Fri 5 Nov - Sun 7 Nov, 10am - 4pm.

A photographic exhibition 'Kingdom Plantae' by Mark Harris Photographer.

Pukeiti is open all day every day. Free admission. It is owned and managed by the Taranaki Regional Council.

\$ FREE  
28 29<sup>th</sup> Oct - 7<sup>th</sup> Nov  
Open all day, every day



## 43 STONY RIVER POTTERY

### Okato Map L

#### Lynn and Mike Spencer

20 Upper Kaihihi Road, Okato 4335

06 752 4351 | 027 873 5168

slmjspencer@gmail.com

200m from SH45. Turn inland at Hotel.

Our pottery showroom is set in a restful and tranquil garden developed over 40 years, enclosed by mature trees and showing fine foliage colour. Villa homestead built 1904. There are also interesting stands of bamboo. Our work for sale includes a full range of tableware and larger pieces. All are made in high fired porcelain. Closed Tues, Wed, Thurs.

\$ FREE  
28 29<sup>th</sup> Oct - 1<sup>st</sup> Nov & 5<sup>th</sup> - 7<sup>th</sup> Nov  
10am - 4pm



FRI to MON & FRI to SUN

## 44 HIKURANGI

### Okato - Rural Map A

#### Maureen Brophy

143 Upper Newall Road, Okato

06 752 4478 | 027 452 5583 | cape.view@xtra.co.nz

Featuring 7 acres of beautiful tranquil gardens including a lake with mountain views. Stroll along the various paths through established plantings with an array of colour and mature trees. Enjoy the peace and serenity of my country garden. Set aside an hour or spend the day exploring. Picnic tables and toilets available. Limited wheelchair access.

\$ 2pp  
28 29<sup>th</sup> Oct - 7<sup>th</sup> Nov  
9am - 4pm



# Taranaki National Art Awards

20 YEARS



2020 Category Winners

AWARDS CEREMONY: 7PM 29 OCTOBER 2021

EXHIBITION: 10AM - 4PM 30 OCT - 6 NOV 2021

SANDFORDS EVENT CENTRE, TASMAN ST, ŌPUNAKĒ, TARANAKI

7 CATEGORIES. \$15 ENTRY TO AWARDS CEREMONY. \$2 ENTRY TO EXHIBITION

www.taranakiartawards.co.nz



**45 CLIFF TOP GARDEN**

Opunake Map M

**Opunake Coastal Walkway**

Situating off Bowen Crescent, Opunake.

A tropical paradise, lovingly cared for by volunteers. An assorted mix of plantings, mostly donated, overlooking Opunake Beach and the very changeable Tasman Sea. Turn in at the Cenotaph and follow sealed road to end. Plenty of parking. Walk in at signage. Wow.

\$ FREE

28 29<sup>th</sup> Oct - 7<sup>th</sup> Nov

Open all day, everyday

**46 LES 'N' ROSES**

Opunake Map M

**Rose and Les Ratahi**

10 Hughson Place, Opunake (off Whitcombe Road)  
06 761 8809 | les.roseratahi@xtra.co.nz

Our garden has evolved over a number of years inspired by a cottage garden theme. There is a canopy of mature trees which is underplanted with over 100 roses, lily, hostas, perennials and seeding annuals which are admired by all as the perfumed garden. Plenty of parking front and rear. Look for signs on Ihaia and Whitcombe Roads.

\$ 2pp

28 29<sup>th</sup> Oct - 7<sup>th</sup> Nov

9.30am - 4.30pm

**47 PIHAMA LAVENDER**

Opunake - Rural Map A

**Liz Sinclair**

3510 South Road, SH45, Opunake 4682  
06 761 7012 | 021 082 98058  
pihamalavender@outlook.co.nz | www.pihamalavender.com

This is a working lavender farm in a historic dairy factory. The garden is almost 6 acres. It includes an indoor fernery, a Mediterranean courtyard and river walks. The garden uses permaculture principles. Oil extraction will be displayed during the festival. Picnickers welcome.

\$ 2pp

28 29<sup>th</sup> Oct - 7<sup>th</sup> Nov

9.30am - 4.30pm

**48 CAMTIKI COUNTRY LODGE**

Opunake - Rural Map A

**Mike and Colleen Starsmore**

692 Patiki Road, RD32, Te Kiri, Opunake  
Colleen 027 485 6254 | Mike 027 522 2242  
camtikicountrylodge@gmail.com  
6.92 km from SH45, 2km from Eltham Rd

Established rural garden, (ex S&G Campbell) purchased in 2017. A sheltered garden of perennials, herbaceous plants, shrubs and mature trees. Features orchard, summerhouse, vegetables, pond and breathtaking views of Mt Taranaki. A quiet rural retreat setting. Opunake Lions café. Plants for sale. Campervans and buses welcome.

\$ 2pp

28 29<sup>th</sup> Oct - 7<sup>th</sup> Nov

9am - 3pm



# Opunake, *mural* town of the west

**...featuring over 20 colourful murals.**

Call in at our Library for a brochure with a map and the background on each mural. Stroll along Opunake's main street, stop off at one of the cafes or browse our shops. Include in your visit our local Fringe Gardens, the lake and Opunake Surf Beach.



We're right by the beach!

Self-Contained Units  
Standard Cabins  
Campsites

06 761 7525  
opunakebeach@xtra.co.nz  
www.opunakebeachnz.co.nz



Indian Restaurant and Bar

Lunch (Sat - Sunday)

Dinner (Tuesday - Sunday)

Phone: 067618358

website: www.indiantadka.co.nz



4 Havelock  
Street, Opunake

**EVERYBODY'S THEATRE OPUNAKE**

FOR OUR LATEST LISTINGS  
VISIT OUR WEBSITE  
OR FIND US ON FACEBOOK!

72 Tasman Street, Opunake | 027 383 7926  
everybodystheatre@gmail.com | www.everybodystheatre.co.nz

**Fish Chips & More**

61 Tasman Street, Opunake

**Ph 06 761 8478**

To order use Regulr app.

Fresh fish, home-made chips, burgers.

G/F option. Open 7 days, 11am til 8-ish.



## Arty Tarts Cafe

90 TASMAN STREET - OPUNAKE

Ph: 027 565 9101





Check us out  
online

where you can view highlights,  
garden information and  
download our programme.

[www.taranakigardens.co.nz](http://www.taranakigardens.co.nz)

 TaranakiFringeGardenFestival/Photos

 taranakifringegardenfestival

 TaranakiFringeGardenFestival

Look for our  
orange flags  
displayed on the  
street side.



## 49 THE TOILETTE STOPPE

Hawera - Rural Map A

**Bev and Andy Davy**

878 Oeo Road, Auroa  
06 274 5727 | 027 417 6938  
davy\_auroa@yahoo.co.nz  
8.78km from SH45

Our garden has changed massively during the 56 years we have lived here. In recent years we have tried to make it "easycare". Have used old toilets, hence the name "The Toilette Stoppe" and other bathroom accessories. Explore the Dell and Andy's "Bog" area down by the creek and listen to the bird song.

\$ 2pp  
28 29<sup>th</sup> Oct - 7<sup>th</sup> Nov  
9am - 5pm



## 50 TARAIRE

Hawera - Rural Map A

**Alison and John Nicholls**

248 Oeo Road  
027 449 8186 | 027 284 0426  
nichollsjanda@gmail.com  
2.5km from SH45

Rambling country garden offering a variety of garden rooms to explore. An informal mixture of trees, shrubs and perennials. Developed over of years this garden provides a serene sanctuary reflecting the owners love of plants and gardening. A definite must see.

\$ 2pp  
28 29<sup>th</sup> Oct - 7<sup>th</sup> Nov  
9am - 5pm



## 51 LUCY'S PLACE

Manaia - Rural Map A

**Charmain and Leo Brennan**

1981 Skeet Road, RD28, Manaia  
06 274 5753 | 027 697 0596  
mrbeesplace@gmail.com  
7km from SH45

An eclectic country garden filled with many points of interest. Off road parking provided. Plants and garden art for sale. Sorry no EFTPOS.

\$ 2pp  
28 29<sup>th</sup> Oct - 7<sup>th</sup> Nov  
9am - 5pm



### BIOBOOST® 6-2-0 – THE FERTILISER FOR ALL SITUATIONS



- Organic granular slow release fertiliser
- Weed free - 67% organic matter
- Will not burn plant roots or foliage
- Can be incorporated when planting or used as a top feed
- Fantastic for ALL lawns, flowers, vegetables, roses, trees, shrubs, & container plants.
- Bioboost is available from : Selected Garden Centres, Commercial Horticultural, Agricultural & Turf Service Centres.
- Check out our website [www.bioboost.co.nz](http://www.bioboost.co.nz)



# From our visitors last year

*'Loved the Garden Festival once again! Beautiful gardens with amazing people creating them. Already looking forward to next year!'*

*'The gardens were wonderful to see, and the gardeners were amazing to show off all that beauty they have created!! Thank you, we will be back!!'*

*'Fantastic festival. So many talented, creative and green fingered people in our region. Congratulations to all.'*

*'We absolutely loved it, thank you for keeping it affordable for those of us who have to travel, we were able to see so many beautiful gardens. The other thing to mention was how friendly, knowledgeable and helpful the hosts were. We learnt so much from you all and it was lovely chatting to you.'*

**Thank you for joining us for the  
17<sup>th</sup> Taranaki Fringe Garden Festival.**

**We look forward to seeing you again in 2022  
and wish you a safe trip home.**







# DISCOVER A REGION LIKE NO OTHER.

## TARANAKI'S TOURING ROUTES

Taranaki's two touring routes offer a fantastic insight into the stunning mountain-to-sea region. Surf Highway 45 traces the coastline, while the Forgotten World Highway links Taranaki to the Central North Island - both will introduce you to the landscape, history, and people that make this region like no other.

### SURF HIGHWAY 45

The Taranaki coast is home to some of the best surf breaks in New Zealand and Surf Highway 45 is the way to get there, but the 105km highway is home to more than just surf. The laid-back culture has given rise to artist and artisan studios, eclectic shops and cozy cafés.

Tap into the coast's many stories along the way, from the substantial Koru Pā inland from Ōākura to the Cape Egmont Lighthouse on Cape Road, while under the watchful gaze of Taranaki Maunga.

### THE FORGOTTEN WORLD HIGHWAY

Tracing ancient Māori trails and pioneering farm tracks from Stratford to Taumarunui, the Forgotten World Highway is New Zealand's oldest heritage trail.

Geographic, historical and scenic points of interest line the 155km route, which traverses four natural saddles and passes through the breath-taking Tangarakau Gorge. The stories of pioneering farmers and miners are experienced through hand-hewn tunnels with the focal point of the route being the historic village of Whangamomona, first settled in 1895 and which declared itself a republic in 1989, complete with its own presidential election.



Forgotten World Adventures

## ART AND CULTURE

The near perfect cone of Taranaki Maunga has been a recurring theme in New Zealand's art history - being painted, drawn or photographed by many of our nation's greatest artists.

The Maunga's creative influence continues to extend beyond its base, offering a journey through studios, galleries, and public art. Stratford's Percy Thomson Gallery, Fenton Arts Collective and Hāwera's Lysaght Watt Gallery cover the spectrum of the local art scene while Govett-Brewster Art Gallery/Len Lye Centre is an art museum that blends stunning architecture with cutting edge contemporary art. The museum is home to the collection and archives of New Zealand artist Len Lye (1901-1980), whose work across film, photography and kinetic sculpture earned him international acclaim.

From the volcanic cone of Taranaki Maunga to the ancient pā sites that have marked the region's hilltops, it's hard not to get drawn into Taranaki's history, best told by one of the region's many great museums.

The best places to start are Puke Ariki, the innovative museum and library on New Plymouth's waterfront is home to exhibitions that explore the region's natural, geological and human stories; Tawhiti Museum - New Zealand's best private museum - near Hāwera, which offers an incredible journey through Taranaki's history; and Aotea Utanganui - the Museum of South Taranaki, which offers an insight into the fortunes of the region over the years.

Taranaki is also home to a wide range of more eclectic collections, including the largest collection of Holden cars in the Southern Hemisphere at the Hillsborough Holden Museum, the Taxidermy museum, and a museum dedicated to the king himself, Elvis Presley.



## GREAT WALKS

Taranaki's legendary landscape offers countless opportunities to explore the outdoors, from gentle strolls to epic alpine adventures.

A great place to start is New Plymouth's Coastal Walkway, which traces the Tasman Sea from Port Taranaki to Bell Block. Along its 12.7km, the walkway passes cafés at Breakwater Bay, East End and Fitzroy, the city centre, artworks and installations, surf breaks and the stunning Te Rewa Rewa Bridge.

At the other end of the spectrum is the Pouakai Crossing, a one-day walk across the northern slopes of Taranaki Maunga over alpine wetlands, through lush native bush, and offers incredible views of the peak reflected in the Pouakai Tarn and out to the Taranaki region.

For a different type of adventure, head inland from Eltham in South Taranaki to the Rotokare Scenic Reserve. After passing through the predator proof fence, you'll find a perfectly peaceful 4.3km walk around the rippling lake, though historically significant bush teeming with an ever-growing population of wildlife.

There truly is something for everyone, from pavement to sub-alpine forrests, there's something for all fitness levels and ages. Tracks range from 15 minute family-friendly walks to the three-to-five day around the mountain hike.

## TARANAKI MUST DOs

There is no shortage of things to see and do in Taranaki, but how do you know what you simply 'must do' when you visit the region? You ask the locals!

There's so much to see and experience, everything from cruising the coast in an historic lifeboat to discovering musical talent at pop-up shows throughout the region. You could take a fantastic short-walk on Taranaki Maunga, discover his story at one of the Mountain's visitor centres, or pull up a seat around the fire at one of the two Mountain houses, and stay a little longer.

Locals suggest wandering through Hāwera's King Edward Park, climbing New Plymouth's Paritutu Rock and taking a stroll through the nationally significant Pukekura Park, checking out Stratford's Glockenspiel Clock Tower, contemplating Len Lye's waterfront Wind Wand sculpture or the vibrant street art throughout the region. If you prefer getting out in nature, explore one of the many award-winning and nationally significant gardens around the region including the spectacular Pukeiti, home to one of the worlds rarest collections of rhododendrons.

Be surprised by how much Taranaki has to offer, and that's before you delve into the many cafés, bars, restaurants and watering holes around the Maunga. Pick up a copy of one of our many great visitor guides from one of the region's i-SITE Visitor Information Centres to discover all of our local secrets!



Holland Gardens



AN INITIATIVE OF

[TARANAKI.CO.NZ/VISIT](https://www.taranaki.co.nz/visit)



Cape Egmont Lighthouse



The Rooftop Bar



Te Rewa Rewa Bridge

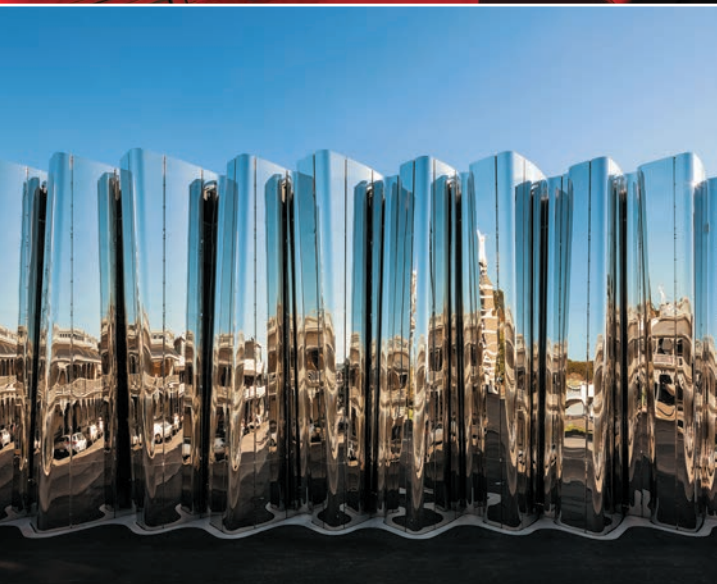


Tairoa Lodge





# Celebrating art, ideas, culture and cinema at the Govett-Brewster Art Gallery/ Len Lye Centre.



## Exhibitions

Explore the works of local, national and international artists as they traverse history, culture and the environment we live in

## The home of Len Lye

Visit the internationally known destination for the life and work of pioneering filmmaker and kinetic sculptor Len Lye (1901-1980)

## Cinema

Watch the latest arthouse and independent releases, international film festivals, as well as cult and classic films

## Public Programmes

Get creative and find new ways of looking at the world, with our regular events and talks from a wide range of cultural thinkers

## Education

Our free, regular drop-in sessions for all - discuss, explore or make art – Gallery Seniors, Sense Art, School Holiday Art, Family Art



Discover more of what the Gallery has to offer by visiting us on Instagram [@govettbrewster](https://www.instagram.com/govettbrewster)

Len Lye, *Rainbow Dance*, 1936  
Courtesy of the Len Lye Foundation and the British Postal Museum and Archive. From material preserved and made available by Ngā Taonga Sound & Vision

42 Queen Street  
New Plymouth  
Aotearoa New Zealand  
[govettbrewster.com](http://govettbrewster.com)



Te Kaunihera-ā-Rohe o Ngāmotu  
**New Plymouth  
District Council**



**Govett-  
Brewster  
Art  
Gallery**

Len Lye  
Centre



# Map A Taranaki Region

**New Plymouth**  
page 26 & 27

32 to 38

**Rural Inset page 25**

13 14 17 to 20  
24 25 29 30 31

**Bell Block Map**  
page 26

26 27 28

**Waitara Map**  
page 26

21 22 23

**Inglewood Map**  
page 24

15 16

**Oakura Map**  
page 28

39 40 41

**Okato Map**  
page 28

43

**Opunake Map**  
page 28

45 46

**Stratford Map**  
page 24

10 11 12

**Eltham Map**  
page 24

8

**Hawera Map**  
page 24

2 3

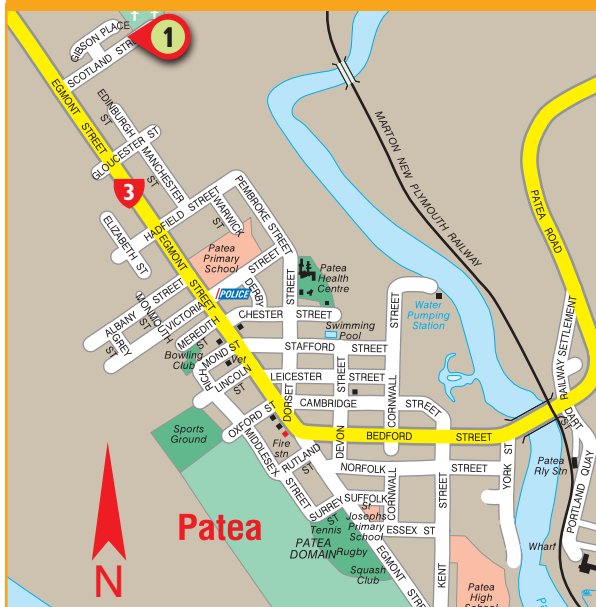
**Patea Map**  
page 24

1





## Map B Patea



## Map C Hawera



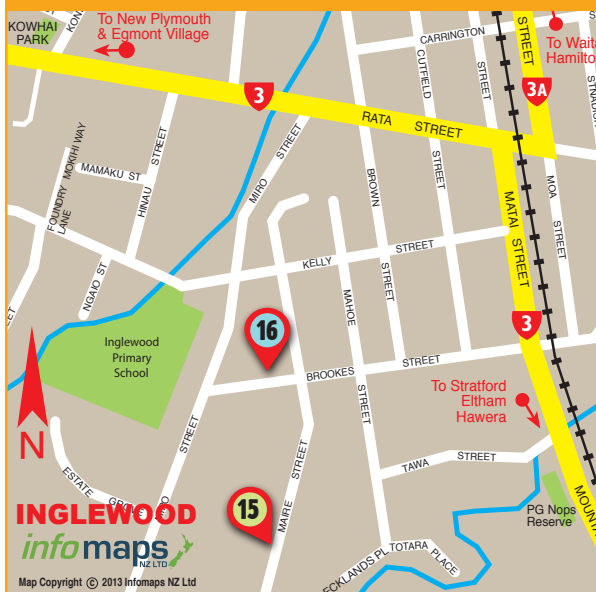
## Map D Eltham



## Map E Stratford



## Map F Inglewood





Map G Rural Inset

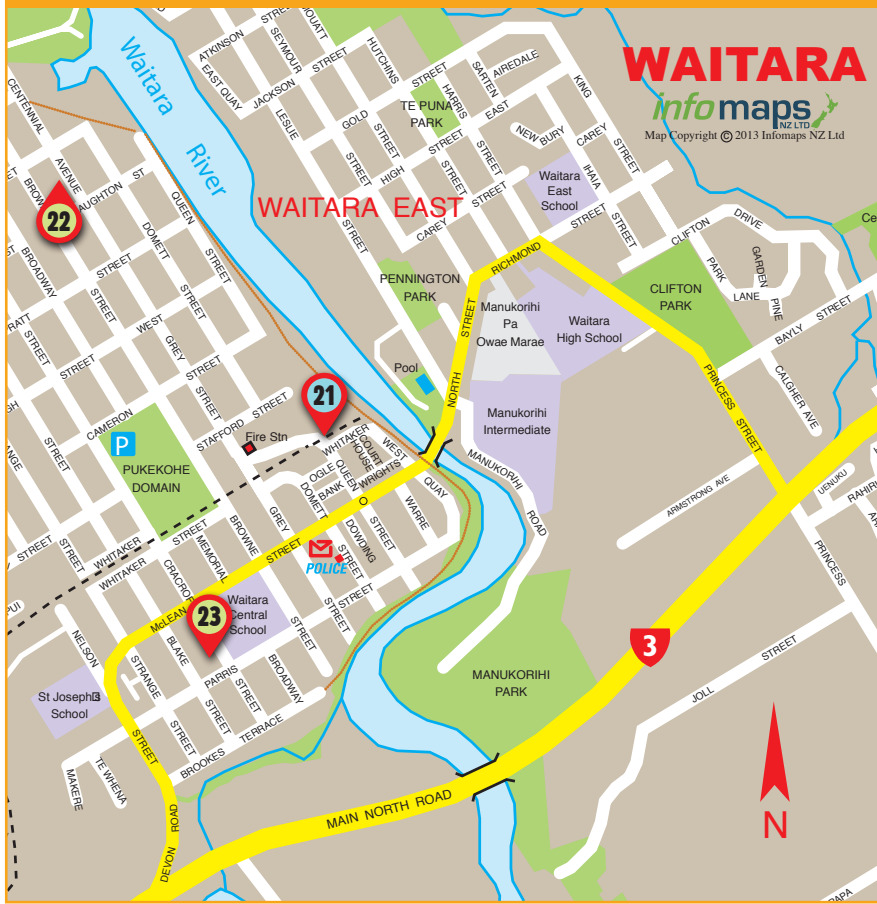


Listing Reference

NO. MAP GARDEN		
1	B	Glascroft
2	C	Little Ardlui
3	C	Gabot's Garden
4	A	Jabulani
5	A	Camellia Cottage
6	A	Hollard Gardens
7	A	Environmental Products
8	D	The Village Gallery
9	A	Rotokare Sanctuary
10	E	Abstract Signs Garden Art
11	E	Regan House
12	E	Mosen's Garden
13	G	Ridgetopp
14	G	Dondo
15	F	Windsor View
16	F	The Potters Shed
17	G	Creekside
18	G	Jersey Lane
19	G	Olde Thyme
20	G	Millfield
21	H	Waitara Railway Preservation Soc.
22	H	Dovehaven
23	H	Surrey's Rock Garden
24	G	Kairau Lodge and Vineyard
25	G	Windsong
26	I	Chapman Garden
27	I	Pai Rawa Atu
28	I	Taylor-Made Gardens
29	G	Orchard Inn
30	G	Townsend Retreat
31	G	Riverbend
32	J	Craigmyle Epiphylliums
33	J	Tupare
34	J	Bushview Gardens
35	J	Seabrook
36	J	The Hidden Garden
37	J	Kowhai
38	J	Shedou Palms
39	K	Koru on Koru Gallery & Sculptures
40	K	Art by the Sea Studio
41	K	Ringcraft Moana Jewellers
42	A	Pukeiti
43	L	Stony River Pottery
44	A	Hikurangi
45	M	Cliff Top Garden
46	M	Les 'n' Roses
47	A	Pihama Lavender
48	A	Camtiki Country Lodge
49	A	The Toilette Stoppe
50	A	Taraire
51	A	Lucy's Place



## Map H Waitara



## Map I Bell Block





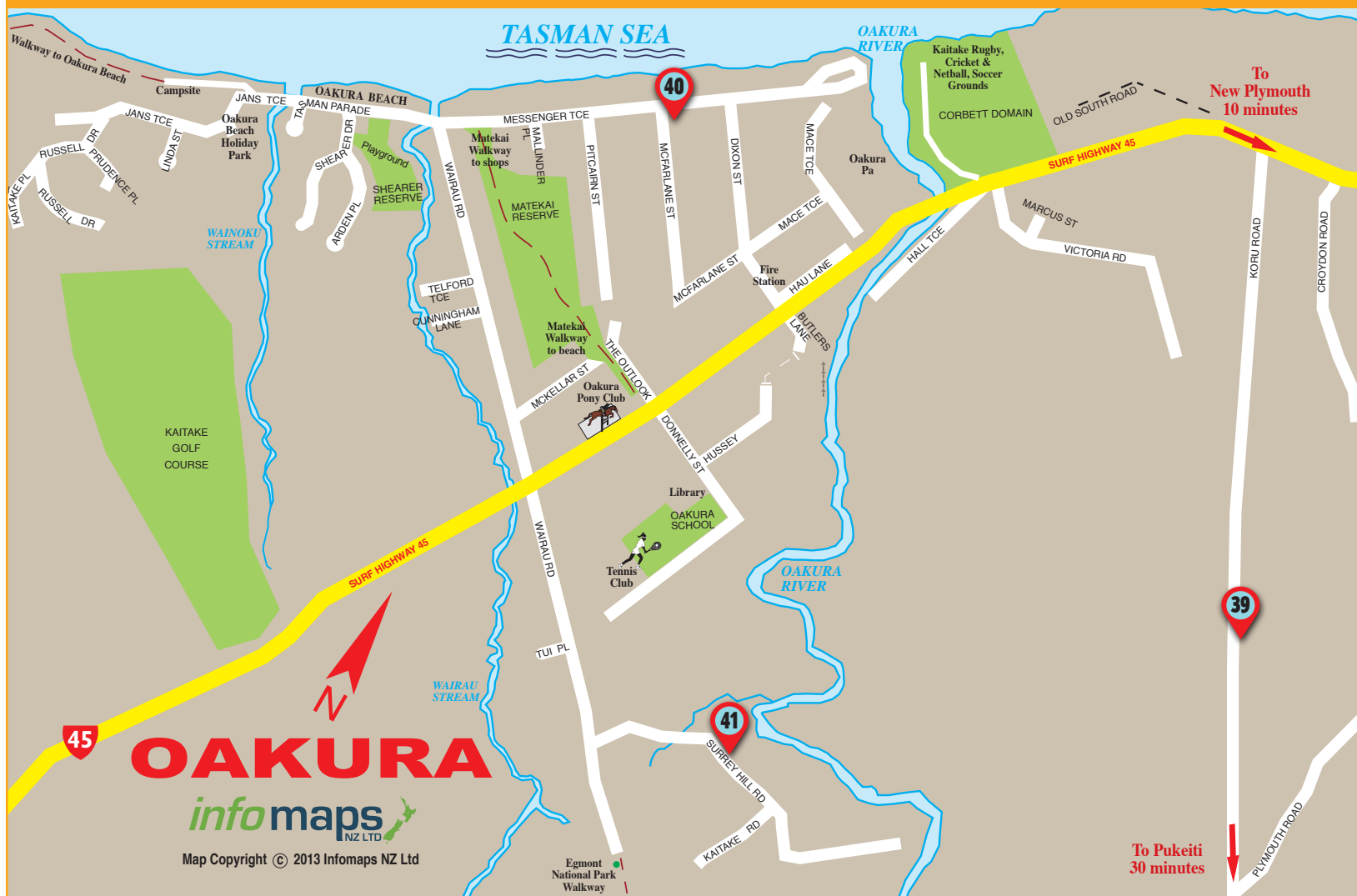
# Map J New Plymouth

0 0.5  
kilometres  
Cartography by Terralink International Ltd  
Copyright © 2013 Terralink International Ltd





# Map K Oakura



# Map L Okato



# Map M Opunake





# Photo Competition

## 2020 Competition placings

### Category: Cottage Style Garden

1 <sup>st</sup>	Astrid Young	"Flower Pots On Tree Stumps"
2 <sup>nd</sup>	Anne Vogel	"In The Pitcher"
3 <sup>rd</sup>	Kathy Keddle	"Cottage Gardens"

### Category: Water

1 <sup>st</sup>	Bernice Hotter	"Lily Pond"
2 <sup>nd</sup>	Vicky Adams	"Naturally Waterproof"
3 <sup>rd</sup>	Peter Wilde	"Forgotten Weir"

### Category: Wonderfully White

1 <sup>st</sup>	Erica Vogel	"The Long White Road"
2 <sup>nd</sup>	Lisa Sims	"White Door"
3 <sup>rd</sup>	Sonja Lawson	"White Washed"

### Category: Shadows

1 <sup>st</sup>	Daniel Exeter	"Heart Of The Garden- No 2"
2 <sup>nd</sup>	Anne Vogel	"Relaxing After A Picnic"
3 <sup>rd</sup>	Anne Vogel	"Cogs Of Cognition"

### Category: Children's section – open to their imagination

1 <sup>st</sup>	Freya Gibson	"Peek A Boo Sun"
2 <sup>nd</sup>	Jude Poole	"Bird Fun"
3 <sup>rd</sup>	Jayden Poole	"Work Never Stands Still"

## 2020 OVERALL WINNER

Wonderfully White  
"The Long White Road"

Erica Vogel



TARANAKI  
GARDEN  
TRUST

## Photo Competition 2021

Bring your camera and capture  
your festival experience!

### Categories for 2021

- Reflections
- Cobwebs
- Flower Cluster
- Children's open section
- Festival best overall photo

## Photo Competition 2021 Entry Form

☐ Please return my photos. I have enclosed a stamped self addressed envelope.

Name: ..... Email: .....

Address: ..... Phone: .....

### Reflections

Photo description: ..... Garden number: ....

Photo description: ..... Garden number: ....

### Cobwebs

Photo description: ..... Garden number: ....

Photo description: ..... Garden number: ....

### Flower Cluster

Photo description: ..... Garden number: ....

Photo description: ..... Garden number: ....

### Children's section - open to their imagination. For children 12 years and under. Date of Birth: .....

Photo description: ..... Garden number: ....

Photo description: ..... Garden number: ....

Photos must be from 2021 Fringe Festival Gardens ONLY. Maximum of 2 photos per category.

Please write your name and category on the back of photo. **Entries must be received by Thursday 18th November 2021.**

Send entries to Fringe Photo Competition, 979 Egmont Road, R.D.2, New Plymouth 4372. Photos must be high quality prints with minimal manipulation. The aim is to show the gardens as they are. Prints to be maximum size of 20 x 30cm (8" x 12") and do not have to be mounted or matted. Please don't send photos by fax, email or on disc. Winners will be notified and their photos on display at the Inglewood Library Wed 24th Nov - Mon 13th Dec 2021; also on the website. Any image entered may be used for promoting the Taranaki Fringe Garden Festival, owner retains copyright.

Please contact Viv Adamson on 027 752 2846 for further information.



Totara Grove

WE CAME  
FOR THE  
BLOOMING  
BEAUTY  
AND  
STAYED  
FOR  
DECADENT  
DINING.

Meat & Liquor

Experience your perfect getaway in Taranaki.  
Pair adventure with dégustation, endless beaches  
with a towering mountain, and picturesque scenery  
with world-class modern art.

[taranaki.co.nz/visit](http://taranaki.co.nz/visit)

TARANAKI

like no other

*Make the most of it!*